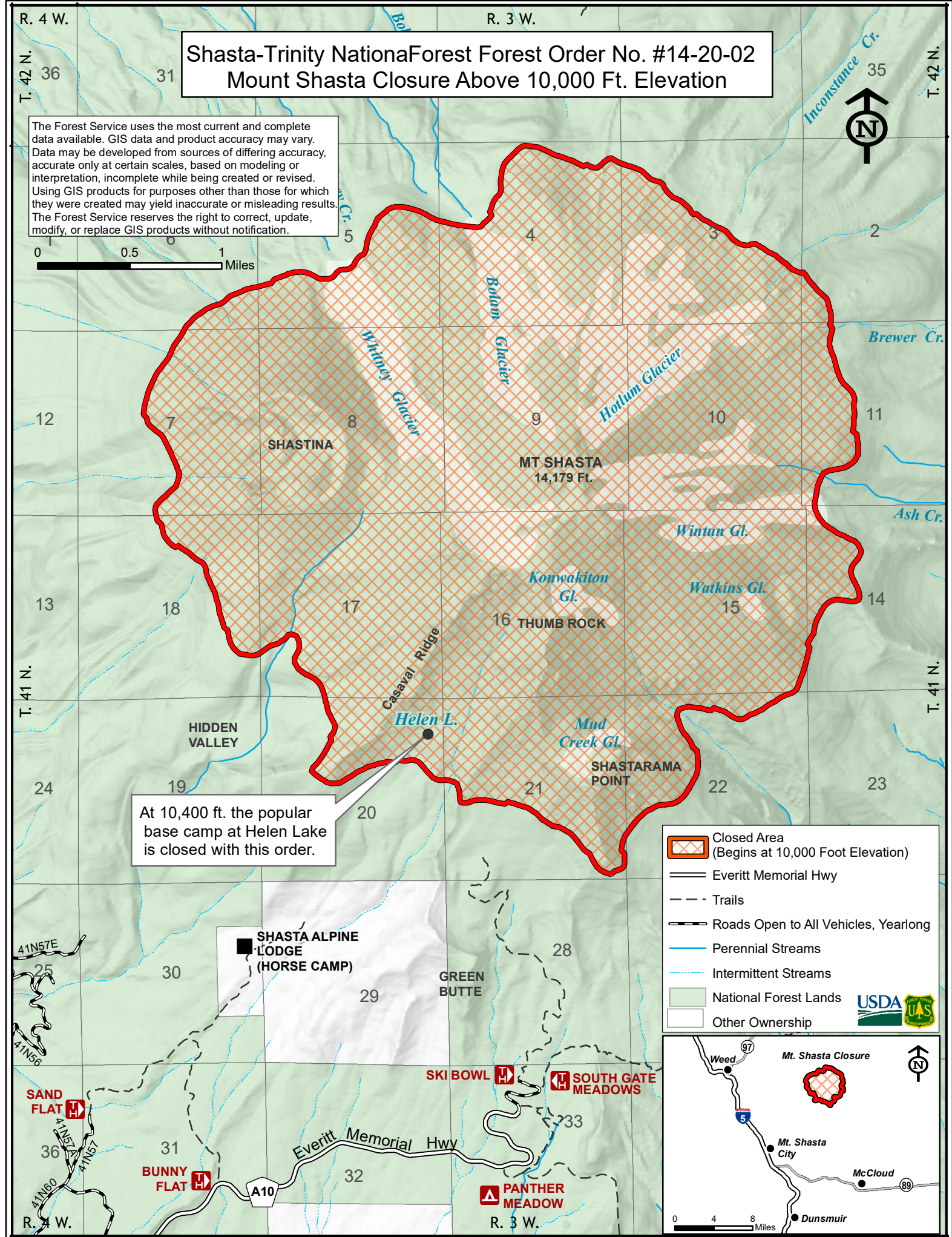


Shasta-Trinity National Forest Forest Order No. #14-20-02

Mount Shasta Closure Above 10,000 Ft. Elevation

The Forest Service uses the most current and complete data available. GIS data and product accuracy may vary. Data may be developed from sources of differing accuracy, accurate only at certain scales, based on modeling or interpretation, incomplete while being created or revised. Using GIS products for purposes other than those for which they were created may yield inaccurate or misleading results. The Forest Service reserves the right to correct, update, modify, or replace GIS products without notification.

0 0.5 1 Miles



At 10,400 ft. the popular base camp at Helen Lake is closed with this order.

- Closed Area (Begins at 10,000 Foot Elevation)
 - Everitt Memorial Hwy
 - Trails
 - Roads Open to All Vehicles, Yearlong
 - Perennial Streams
 - Intermittent Streams
 - National Forest Lands
 - Other Ownership
- USDA U.S. Forest Service

